

СУДОВЫЕ ДВИГАТЕЛИ СЕРИИ TCD 914M



Архангельск (8182)63-90-72
Астана (7172)727-132
Астрахань (8512)99-46-04
Барнаул (3852)73-04-60
Белгород (4722)40-23-64
Брянск (4832)59-03-52
Владивосток (423)249-28-31
Волгоград (844)278-03-48
Вологда (8172)26-41-59
Воронеж (473)204-51-73
Екатеринбург (343)384-55-89
Иваново (4932)77-34-06

Ижевск (3412)26-03-58
Иркутск (395)279-98-46
Казань (843)206-01-48
Калининград (4012)72-03-81
Калуга (4842)92-23-67
Кемерово (3842)65-04-62
Киров (8332)68-02-04
Краснодар (861)203-40-90
Красноярск (391)204-63-61
Курск (4712)77-13-04
Липецк (4742)52-20-81

Магнитогорск (3519)55-03-13
Москва (495)268-04-70
Мурманск (8152)59-64-93
Набережные Челны (8552)20-53-41
Нижний Новгород (831)429-08-12
Новокузнецк (3843)20-46-81
Новосибирск (383)227-86-73
Омск (3812)21-46-40
Орел (4862)44-53-42
Оренбург (3532)37-68-04
Пенза (8412)22-31-16

Пермь (342)205-81-47
Ростов-на-Дону (863)308-18-15
Рязань (4912)46-61-64
Самара (846)206-03-16
Санкт-Петербург (812)309-46-40
Саратов (845)249-38-78
Севастополь (8692)22-31-93
Симферополь (3652)67-13-56
Смоленск (4812)29-41-54
Сочи (862)225-72-31
Ставрополь (8652)20-65-13

Сургут (3462)77-98-35
Тверь (4822)63-31-35
Томск (3822)98-41-53
Тула (4872)74-02-29
Тюмень (3452)66-21-18
Ульяновск (8422)24-23-59
Уфа (347)229-48-12
Хабаровск (4212)92-98-04
Челябинск (351)202-03-61
Череповец (8202)49-02-64
Ярославль (4852)69-52-93

Киргизия (996)312-96-26-47

Россия (495)268-04-70

Казахстан (772)734-952-31

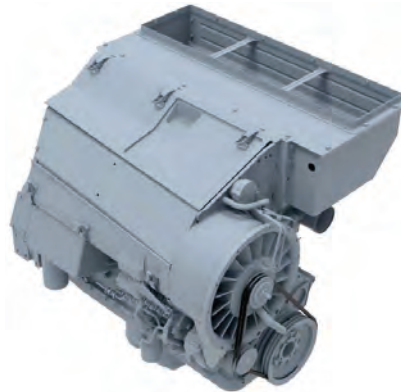
<https://deutz.nt-rt.ru> || dze@nt-rt.ru

TCD 914M

for marine applications

65 - 137 kW | 87 - 184 hp at 1500/1800 min⁻¹ | rpm
emission certified & type approved

- Air-cooled 6-cylinder engine for auxiliary drives with turbocharging and charge-air cooling.
- Due to the air cooling, the integration of the engine into the classic engine-cooling version of marine engines is omitted. Installation of the unit onto the deck is possible.
- The very compact engine design and the flexibility of the positioning of the unit reduce the installation costs.



- Low fuel consumption, low maintenance costs and long life reduce the running costs.
- DEUTZ marine engines are developed especially for the requirements of marine applications and meet the requirements of the classification societies. Type Approvals of the IACS classes¹⁾ and other classes are available on request.
- The robust engine design allows worldwide operation even with high sulphur fuels.

Technical data

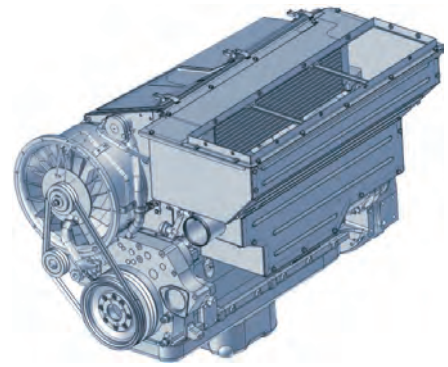
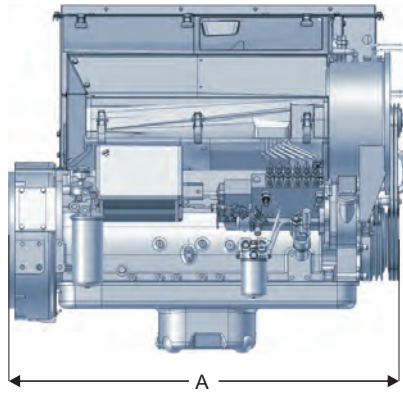
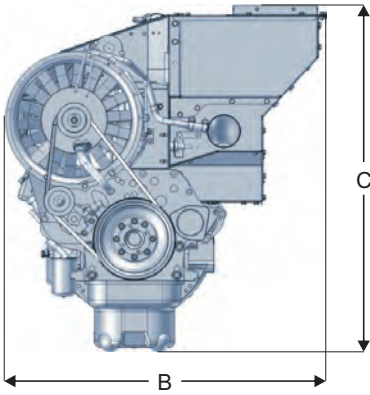
Engine type		TD 914 L6M	TCD 914 L6M		
No. of cylinders		6	6		
Bore/stroke		mm in	102/125 4.02/4.92		
Displacement		l cu in	6.1 374		
Compression ratio		17:1	17:1		
Nominal speeds auxiliary engines		min ⁻¹ rpm	1500 / 1800		
Specific fuel consumption ²⁾		g/kWh lb/hph	220 0.36		
Power output ³⁾		TD 914 L6M	TCD 914 L6M		
Auxiliary engines	- LG G	50Hz	kW hp	77 103	99 133
		60Hz	kW hp	99 133	129 173
Auxiliary engines	- LG N	50Hz	kW hp	88 118	113 152
		60Hz	kW hp	106 142	137 184
Auxiliary engines	- LG C		kW hp	112 150	120 161

LG G: Unlimited continuous operation with unlimited workload.
LG N: Unlimited continuous operation with limited workload.
 Operating time with more than 90% of maximum power: max. 6000 oh p.a.⁴⁾
 Admissible workload: max. 80% of rated power.

- 1) IACS – International Association of Classification Societies
- 2) Best full load consumption refers to diesel with a density of 0.835 kg/dm³ at 15°C | 6.96 lb/US gallon at 60°F.
- 3) Capacity data in accordance with ISO 3046-1.
Further ratings on request.
- 4) oh p.a.: Operating hours per year

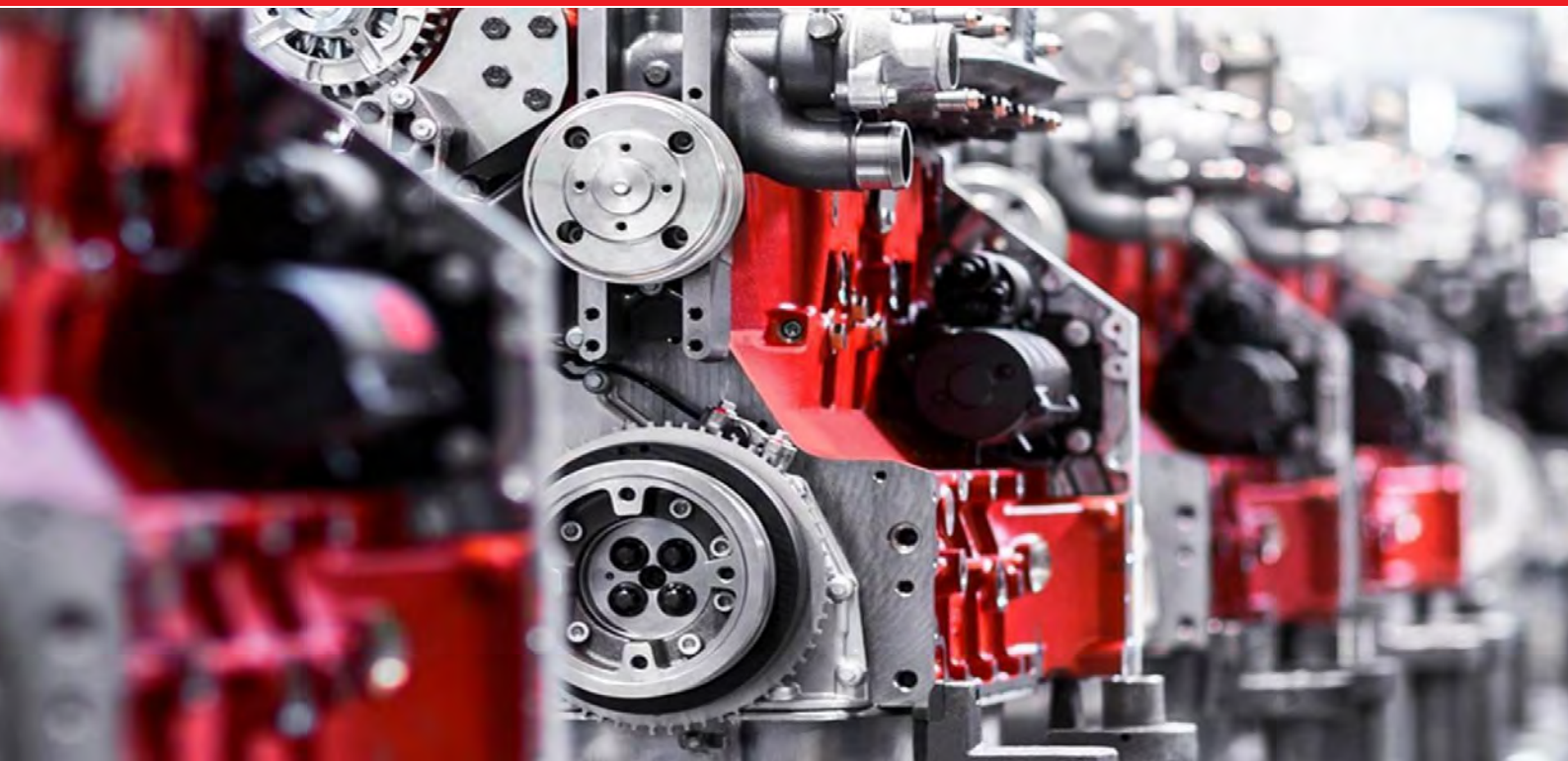
The data on this data sheet are for information purposes only and are not binding values. The data in the quotation is definitive.

Dimensions



		A	B	C	Weight
TD 914 L6M	mm in	1190 47	965 38	1048 41	555 kg 1224 lb
TCD 914 L6M	mm in	1190 47	965 38	1048 41	570 kg 1257 lb

Note: The engine dimensions and weights vary depending on the scope of delivery.



Архангельск (8182)63-90-72
Астана (7172)727-132
Астрахань (8512)99-46-04
Барнаул (3852)73-04-60
Белгород (4722)40-23-64
Брянск (4832)59-03-52
Владивосток (423)249-28-31
Волгоград (844)278-03-48
Вологда (8172)26-41-59
Воронеж (473)204-51-73
Екатеринбург (343)384-55-89
Иваново (4932)77-34-06

Ижевск (3412)26-03-58
Иркутск (395)279-98-46
Казань (843)206-01-48
Калининград (4012)72-03-81
Калуга (4842)92-23-67
Кемерово (3842)65-04-62
Киров (8332)68-02-04
Краснодар (861)203-40-90
Красноярск (391)204-63-61
Курск (4712)77-13-04
Липецк (4742)52-20-81

Магнитогорск (3519)55-03-13
Москва (495)268-04-70
Мурманск (8152)59-64-93
Набережные Челны (8552)20-53-41
Нижний Новгород (831)429-08-12
Новокузнецк (3843)20-46-81
Новосибирск (383)227-86-73
Омск (3812)21-46-40
Орел (4862)44-53-42
Оренбург (3532)37-68-04
Пенза (8412)22-31-16

Пермь (342)205-81-47
Ростов-на-Дону (863)308-18-15
Рязань (4912)46-61-64
Самара (846)206-03-16
Санкт-Петербург (812)309-46-40
Саратов (845)249-38-78
Севастополь (8692)22-31-93
Симферополь (3652)67-13-56
Смоленск (4812)29-41-54
Сочи (862)225-72-31
Ставрополь (8652)20-65-13

Сургут (3462)77-98-35
Тверь (4822)63-31-35
Томск (3822)98-41-53
Тула (4872)74-02-29
Тюмень (3452)66-21-18
Ульяновск (8422)24-23-59
Уфа (347)229-48-12
Хабаровск (4212)92-98-04
Челябинск (351)202-03-61
Череповец (8202)49-02-64
Ярославль (4852)69-52-93

Киргизия (996)312-96-26-47

Россия (495)268-04-70

Казахстан (772)734-952-31

<https://deutz.nt-rt.ru> || dze@nt-rt.ru